



implico

Business Automation

Bridge
the Gap!

OpenTAS[®]
Net Production



Bridge the Gap!

An exact insight into a refinery's production enabling flexible supervision requires an enormous amount of work.

Frequently a refinery mass balance software is installed for the employees in production. This generates a graphic overview of the production flow and provides a technical overview of the facility. However this data is only of very limited use for the supply and sales team in the head office. They urgently require an overview of the commercial transactions during the production. Implico is now offering a largely automated management tool to meet these complex requirements: OpenTAS® Net Production.

OpenTAS bridges the gap between the technical and commercial worlds. The solution takes the quality of information and the transparency for the supply and sales team to a completely new level, dramatically improving commercial control over the facility.

A Complex Task

It is difficult to imagine quite how complex the task actually is: in order to obtain an exact and up to date overview of the product flow's commercial dimensions it is necessary to continually measure, collect and bundle huge quantities of data. Incoming positions, outgoing positions, inventories, sales, cancellations – thousands of bookings must be processed on a daily basis.

This is even more of a challenge if the refinery has to process crude oil for several different customers. It is then no longer enough for the management just to know their own product balance. Instead they also need to be able to record the individual movements and current stock amount for every single customer and also be able to continually provide the customer with reports on the current figures.

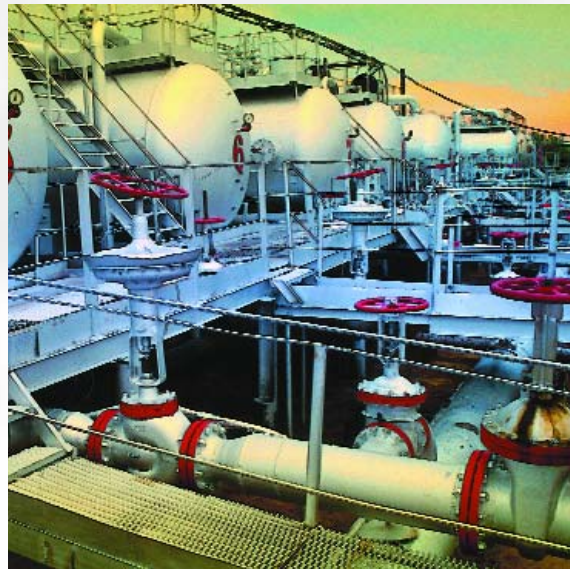
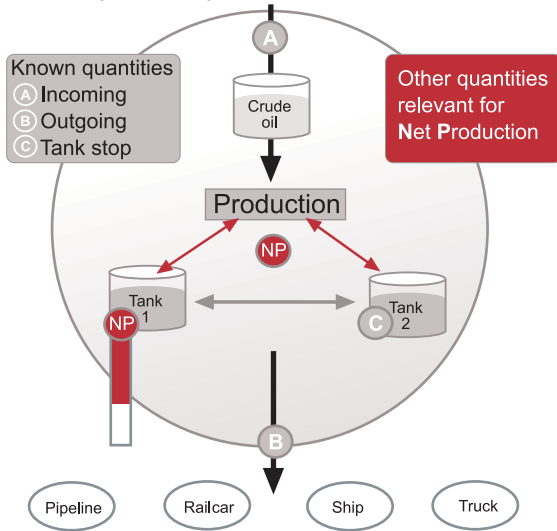
OpenTAS Net Production optimally supports the field of refinery service. The system offers extensive functions for the efficient and transparent management of multiple customers.

A Convincing Solution

Using all bookings as well as the transactions in the loading area, OpenTAS Net Production calculates the commercial flow within the facility. This unique function not only enables the daily calculation of the net production, but also continually allows for data corrections and is thereby permanently able to deliver the exact figures on time – thus realizing a 'see-through' refinery.

The proven technological basis for this function is Implico's OpenTAS system which records and processes the data before forwarding it on to the ERP/SAP® system.

Primary Supply / Net Production



OpenTAS Net Production

In order to quickly calculate net production it is highly beneficial to have a loading system as the technical basis. OpenTAS Net Production is able to monitor the tank stocks as well as the incoming and outgoing (sold) amounts.

As the beginning-of-day amount from one day is the same as the end-of-day amount from the previous day, all of the tank stocks need only to be transmitted to the OpenTAS system once a day in order to provide the necessary data basis for the calculation of the net production.

Complete Control of the Stocks

With OpenTAS you always have an overview of the net production in your refinery. The system analyzes the tank stocks as well as input and output.

The product flow is calculated from these measurements; reports show you the exact daily, weekly and monthly balance. This pragmatic approach delivers comprehensive, easily accessible and fast results.

Comprehensive

A refinery's technical measuring systems can only cover 90% of the movements. OpenTAS also takes the remaining movements into account, for example material that has already been loaded or pre-loaded. Even inputs which are still unbooked in a railcar appear in the stock.

Simple

No specialized knowledge is required to calculate the production. One click is all you need, and OpenTAS gives you the result.

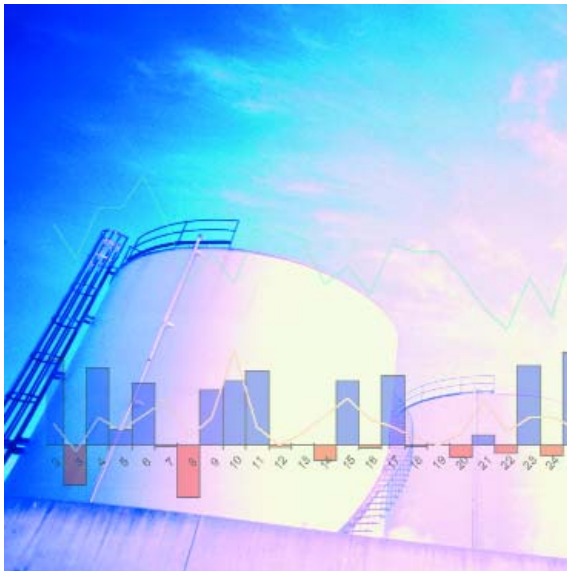
Fast

By direct database programming we achieve superb performance: all postings for all products are calculated in less than one minute – whenever and as often as you want.

OpenTAS Net Production provides the supply and sales team with the exact information they require in order to make the optimal commercial decision. This is necessary for the following tasks, e.g.:

- Supply crude oil
- Supply terminals
- Refinery plan
- Service contract with refinery

With OpenTAS you receive a flexible and efficient instrument to optimally control refinery production, complete with certified SAP interfaces.



OpenTAS and SAP – a Perfect Team

The OpenTAS system and with it the OpenTAS Net Production module work together with your SAP solution in a highly integrated way.

The data exchange takes place by means of certified interfaces which optimally support and thereby highly enhance both the ERP and the dispatch system's functions.

The result of the high integration of OpenTAS and SAP is a combined solution which consistently takes advantage of both system's strengths. If, for example, SAP is the first choice for financial planning and administration, OpenTAS will profit from these resources.

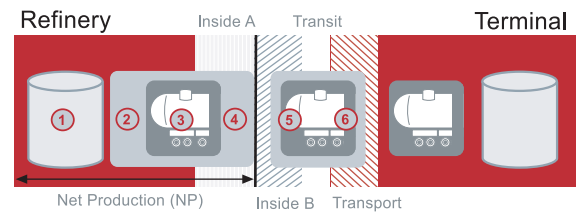
OpenTAS' main strengths lie in its uncompromising commitment to the requirements of the oil, gas and chemicals industry. The advantages of this specialization are of course reflected in the special features and in the flexibility and performance.

Calculations in Record Time

The calculation of production is a complex task and can take many hours with SAP. In order to protect the users from performance problems as much as possible, this work normally takes place at night.

OpenTAS Net Production can however carry out the task in record time: the software analyzes the bookings and automatically calculates the differences in

Net Production and Transit



- ① Stock in tank (from tankfarm management system / production)
- ② Preload – related to service plan in OpenTAS / TSW
- ③ SAP order / nomination / shipment assignment
- ④ Movement from tank into railcar / truck / pipe / ship
- ⑤ 'Leaving' loading area (NP transit)
- ⑥ Hand over to 3rd party service company (transit)

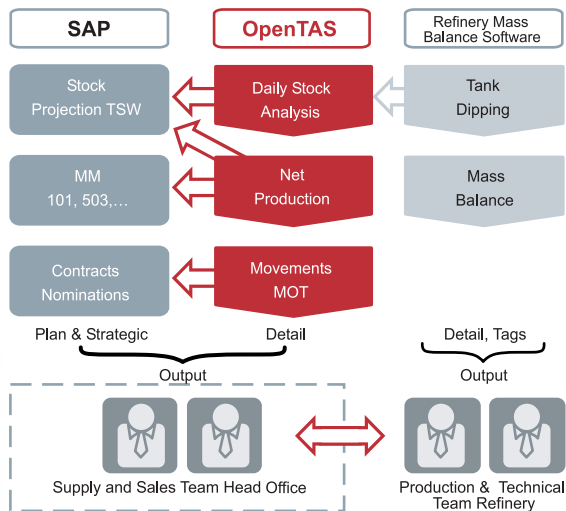
less than one minute. OpenTAS then immediately makes the results available to the SAP solution which can process them further.

The speed of OpenTAS Net Production also means that the data for quantity accounting and finance is available in the shortest possible time. Whereas the conventional account balancing procedure often takes between four and six days, OpenTAS delivers the necessary information in a matter of hours.

An integrated overall solution made up of OpenTAS and SAP offers you numerous advantages:

- Many calculations are carried out much faster; the results are available immediately.
- The SAP system is freed from labour intensive tasks.
- OpenTAS provides more flexible and user-friendly management for numerous industry specific tasks.

Procedure in Detail – Basic Data



OpenTAS and Refinery Mass Balance Software

Under no circumstances does OpenTAS replace a refinery mass balance software – and vice versa! Both systems are geared towards different tasks and complement each other. The refinery mass balance software provides meter readings at specific times and thereby information which is very important for the technical employees in the production.

A refinery mass balance software does however have critical weak points: it functions in the same way as a report and only delivers numbers. There is therefore no reference of any kind to the commercial transactions. It is, for example, not possible to display cancellations. The system is not integrated into the Supply Chain Management and is not transaction secure.

With OpenTAS, refineries are finally able to bridge the gap between refinery mass balance software and the SAP system. The system is finely tuned to the commercial business person's needs. It provides the complete finance and management areas with valuable, up-to-date and quickly available information on the commercial transactions.

Highlight Transaction Security

In contrast to a straight meter reading report, the OpenTAS Net Production functionality provides you with information about which amounts are currently being loaded, to which order they belong and what has happened in the past. All because OpenTAS is

transaction secure. Incoming positions, outgoing positions, cancellations etc. are all recorded, analyzed and consistently displayed.

Example: 'cancellations'

Data which has already been entered into the system frequently has to be subsequently changed on account of production differences or because documents only arrived after several days delay.

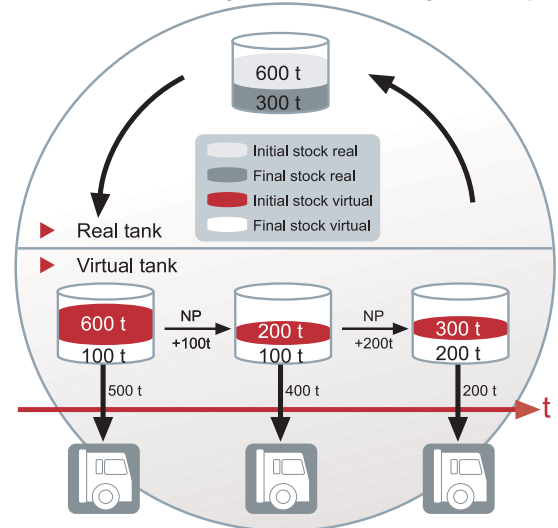
The refinery mass balance software is normally unable to deal with these circumstances, but with OpenTAS Net Production such occurrences are no problem whatsoever. The transaction secure software processes retroactive changes in the correct way for the accounts and then transfers the correct data into SAP.

Both the supply and sales team and the accounts department benefit from this transparency.

After all, reliable, efficient and successful planning is only possible with a valid data foundation.



Production Change in Tank During the Day



Advantages Overview

- Distinct increase in the information quality for the supply and sales team
- Transaction security; cancellations and new postings processed according to accounting department rules
- OpenTAS' high level of integration with SAP and a refinery mass balance software
- Calculation of data for quantity and finance accounting in record time
- Bridging the gap between the commercial and technical worlds
- Standard tool which is continuously developed
- Quickly accessible results
- User-friendly
- SAP systems relieved
- Very current results
- Cumulative display, flexible, self-correcting
- Certified interface
- Extensive possibilities for automation

OpenTAS – Further Highlights

Unlimited Rollout

OpenTAS gives you maximum flexibility, whether you need a single local installation, a regional or national solution or even a world-wide rollout.

Simple Migration

Migration is uncomplicated and takes place both quickly and safely. The field components are not affected. OpenTAS supports all of the definitive industry standards for communication in the oil, gas and chemical industries, including PIDX and CIDX.

Step-by-Step Installation / Modular Construction

OpenTAS' modular system construction enables you to install the desired functions step-by-step when you need them. You dictate the pace and OpenTAS will follow.

Real-Time Reporting

The system continuously takes current data from the ERP or the field system and forwards it immediately, according to your requirements.

OpenTAS.NET

Connect your system to other customers or business partners throughout the world via OpenTAS.NET. Simple, secure and high-performance.

Web Reporting

Another OpenTAS highlight is its extensive, current reporting. You can access all of these reports via the internet.



OpenTAS – the Proven Basis

OpenTAS is the integral administration and dispatch system for the mineral oil, gas and chemicals industry.

It is the only system worldwide which, in addition to the usual administration and dispatch functions, also offers extensive business process support and enables integration into an SAP / ERP solution.

Implico – Company Profile

As an international consulting and software company, Implico has been helping customers from different industries with the optimization of their business processes for more than 30 years.

Projects are being implemented with comprehensive industry know-how as well as in budget and on time.

Implico offers professional, integrated consultancy and implementation services from one source.

Business Automation



A10; © Implico. SAP R/3 is the trademark or registered trademark of SAP AG in Germany and in several other countries; OpenTAS is the registered trademark of Implico GmbH, Germany.



www.implico.com



Germany | Malaysia | Switzerland | UK | USA